



SIR KENNETH PRESTON TROPHY 10 – 11 JUNE 2017

ORGANISING AUTHORITY
ROYAL YACHT SQUADRON
COWES, UK

SAILING INSTRUCTIONS

The notation '[DP]' in a rule in the Sailing Instructions means that the penalty for a breach of that rule may, at the discretion of the protest committee, be less than disqualification.

1. RULES

The regatta will be governed by:

- 1.1 The rules as defined in the Racing Rules of Sailing 2017 - 2020(RRS).
- 1.2 The International Etchells Class Rules (ECR).
- 1.3 Sails may be borrowed for this event in accordance with Etchells Class Rules C 10.3 (i).
- 1.4 The Class will provide Bow Sticker Numbers, which shall be displayed 52.5cm back from the bow and 6cm from the shearline. Single digit numbers (e.g."2") must display the leading zero (e.g."02"). [DP]
- 1.5 The byelaws for the Port of Southampton, Portsmouth Harbour and Cowes Harbour. [DP]
- 1.6 Non-owners may compete in loaned boats provided that the boat is insured in accordance with the NoR.

2. NOTICES TO COMPETITORS

- 2.1 Notices to competitors will be posted on the Official Notice Board (ONB) in the Royal Yacht Squadron. Notices will also be posted at the Etchells base in Cowes Yacht Haven (CYH).
- 2.2 The starting area/committee boat location may be announced on VHF approximately 1 hour before the first warning signal.

3. CHANGES TO SAILING INSTRUCTIONS

- 3.1 Any change to the Sailing Instructions (SIs) made ashore will be posted by 0900 on the day it will take effect, except that any change to the schedule of races will be posted by 2000 on the day before it will take effect.

4. SIGNALS MADE ASHORE

- 4.1 Signals made ashore will be displayed at the RYS Lodge Flagstaff.
- 4.2 When flag AP is displayed ashore, "1 minute" is replaced by "not less than 45 minutes". This changes Race Signals AP.

5. SIGNALS MADE AFLOAT

- 5.1 After a long postponement, to alert boats that a race or sequence of races will begin soon, an orange flag will be displayed with one sound signal at least four minutes before a warning signal is displayed.

6. SCHEDULE OF RACING

- 6.1 The intention of the Race Committee is to run six races over the two days of the regatta.
- 6.2 The Race Committee intends to run no more than three races each day. However additional races may be sailed in order to complete the programme because of weather or other reasons.
- 6.3 On the last day of racing, no warning signal will be made after 1500.
- 6.4 Schedule including times of HW Portsmouth in BST.

DAY HWP (BST)	BRIEFING	FIRST WARNING SIGNAL	NOTES
Sat 10 June HW 1310 4.4 m	1000	1155	Briefing in CYH Race 2 & 3 asap after each finish.
Sun 11 June HW 1340 4.4 m		1025	Race 5 & 6 asap after each finish. Prizegiving asap after racing in RYS.

7. CLASS FLAGS

- 7.1 The class flag will be ICOS flag E.

8. RACING AREA

- 8.1 Racing will take place from a Committee Vessel in the Eastern Solent, including the Bramble Bank. The approximate location of the committee vessel will be announced on VHF Channel 77.

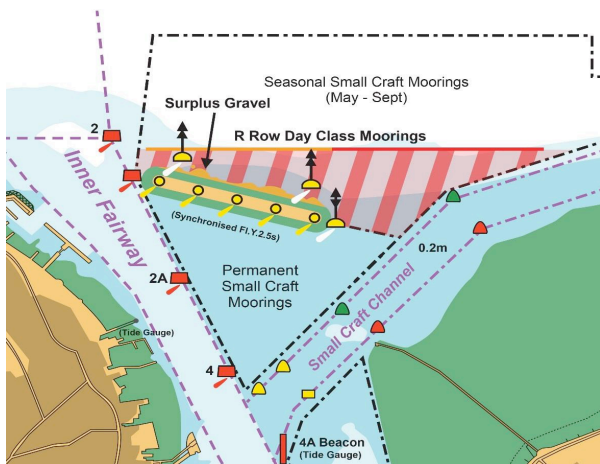
9. COURSES

- 9.1 The format for racing will be windward/leeward. See Addendum A.
- 9.2 The course letter and number of laps will be shown on the Committee Vessel.
- 9.3 The diagrams in Addendum A of these Sailing Instructions show the courses, including the approximate angles between legs, the order in which the marks are to be passed, and the side on which each mark is to be left.

- 9.4 The Race Committee may decide to run courses using laid and/or fixed racing or navigation marks. Courses will be announced by VHF Ch 05.
- 9.5 A list of marks, two character codes and chartlets can be found in Addendum B of these Sailing Instructions.
- 9.6 No later than the Warning Signal, the Race Committee Vessel will display the approximate compass bearing of the first leg and the course to be sailed.

10. NAVIGATION RESTRICTIONS

- 10.1 Boats shall not anchor or kedge in the Cowes Harbour fairway or within the area denoting power cables and gas pipes between Stone Point and Gurnard Bay, as shown on Admiralty Chart 2040, or within the mining ground area north east of Ryde Sand.
- 10.2 All yachts shall comply with Associated British Ports Notice to Mariners No 3 of 2016 giving details of a Precautionary Area and Moving Prohibited Zone (MPZ). The MPZ shall rank as an obstruction for the purposes of RRS 19 and 20.
- 10.3 Whilst racing, boats shall pass to the north of the Cowes Breakwater.
- 10.4 Boats, whilst racing and in whatever direction they are sailing, shall stay out of the area of Day Class Moorings shown in the diagram below. The northernmost line of moorings shall rank as an obstruction for the purposes of RRS 19 and 20. Boats are further requested not to sail in this area when proceeding to and from the race area (with the exception of those boats proceeding to or from one of the moorings within this area). [DP]



11. MARKS

- 11.1 With reference to Addendum A. Marks 1, 1a, 2a & 2b will be orange inflatable marks.
- 11.2 A new mark, as provided in SI. 14 will be a Black inflatable mark.
- 11.3 The starting and finishing marks will be orange inflatable marks.

12. THE START

- 12.1 The starting line will be between a staff displaying an orange flag and an orange inflatable ODM mark. The

ODM may be replaced by a flag-staff displaying an orange flag on a pin end boat.

- 12.2 Late Starting: a boat starting later than 4 minutes after her starting signal will be scored DNS.

13. RECALLS

- 13.1 The Race Committee may broadcast the bow numbers of individually recalled yachts on VHF Ch 05 as soon as practical after ICOS Flag X has been displayed. Failure to do so is not grounds for redress.

14. CHANGE OF THE NEXT LEG OF THE COURSE

- 14.1 To change Mark 1 of the course, the Race Committee may lay a new mark and remove the original mark as soon as practicable. The new mark will be a Black Inflatable.
- 14.2 The position of any laid inflatable mark(s) may be adjusted by up to plus or minus 10 degrees relative to previous laid mark(s) and up to approximately 500 metres to windward or leeward without signalling code flag C nor + nor -. This changes RRS 33.

15. THE FINISH

- 15.1 The finish line is between the staff or halyard displaying an orange flag on a Committee Vessel and the course side of the ODM.

16. PENALTY SYSTEM

- 16.1 Rule 44.1 is changed so that the Two-Turns penalty is replaced by the One-Turn Penalty except that for infringements occurring within the Zone the penalty shall be a Two-Turns Penalty.

17. TIME LIMITS

- 17.1 The following time limits, will apply.
- Mark 1 Time Limit. The time limit for the first boat to pass Mark 1 is 30 minutes.
 - Race Time Limit. The time limit for boats to sail the course and finish is 90 minutes.
 - Finishing Window. The time limit for boats to finish after the first boat sails the course and finishes is 30 minutes.
- 17.2 If no boat has passed Mark 1 within the Mark 1 Time Limit, or if no boat has finished within the Race Time Limit, the race shall be abandoned.
- 17.3 Boats failing to finish within the Finishing Window shall be scored Did Not Finish without a hearing. This changes RRS 35, A4 and A5.

18. PROTESTS AND REQUESTS FOR REDRESS

- 18.1 Protest forms are available at the Race Office. Protest and requests for redress or reopening shall be delivered to the Race Office within the protest time limit. Contact mobile phone numbers should be included on the protest form.
- 18.2 The protest limit is 90 minutes after the last boat has finished the last race of the day or the Race Committee signals no more racing today, whichever is later.

- 18.3 Notices will be posted no later than 30 minutes after the protest time limit to inform competitors of the hearings in which they are parties or named as witnesses. Hearings will be held in the protest room located at the RYS.
- 18.4 Notices of Protests by the Race Committee, Technical Committee or Protest Committee will be posted to inform boats under RRS 61.1(B).
- 18.5 On the last scheduled day of racing a request for redress based on a protest committee decision shall be delivered no later than 30 minutes after the decision was posted. This changes RRS 62.2.

19. SCORING

- 19.1 The Low Point System of RRS Appendix A will apply.
- 19.2 One race shall be completed to constitute a series.
- 19.3 There will be one discard after 5 or more races have been completed.

20. SAFETY REGULATIONS

- 20.1 All boats shall sail past the committee vessel on starboard tack and hail their sail or bow number prior to start of the first race each day. *[DP]*
- 20.2 A boat that retires from a race shall notify the Race Committee as soon as possible on VHF Ch 77 or by hailing an official regatta support boat or rib. *[DP]*

21. EQUIPMENT AND MEASUREMENT CHECKS

- 21.1 A boat or equipment may be inspected at any time for compliance with the Class Rules and Sailing Instructions.

22. SUPPORT BOATS

- 22.1 Team leaders, coaches and other support personnel must stay outside areas where boats are racing from the time of the preparatory signal for each start thereafter until all boats have finished or retired or the Race Committee signals a postponement, general recall or abandonment. *[DP]*

23. TRASH DISPOSAL

- 23.1 Trash may be placed aboard support or official boats.

24. HAUL OUT RESTRICTIONS

- 24.1 Boats shall be afloat before 1730 on the day before the Regatta begins. *[DP]*
- 24.2 Boats shall not be hauled out during the event except with and in accordance to the terms of the prior written permission of the Race Committee. *[DP]*

25. DIVING EQUIPMENT AND PLASTIC POOLS

- 25.1 Underwater breathing apparatus and plastic pools or their equivalent shall not be used around competing boats between the warning signal of the first race and the end of the Regatta. *[DP]*

26. RADIO COMMUNICATIONS

- 26.1 All Yachts shall carry a Marine Band VHF Radio capable of receiving all normal International Channels. *[DP]*
- 26.2 The Race Committee intends to broadcast race information and course information by VHF Ch 05.
- 26.3 Competitors wishing to communicate with the Race Committee should do so on VHF Ch 77.
- 26.4 Except in an emergency, a boat shall neither make radio transmissions while racing nor receive radio communications not available to all boats. This restriction applies to all communication devices except to any Tracker Device or Tracker App supplied by the Organising Authority.

27. TRACKING.

- 27.1 You may be requested to use tracking software on your smart phone or to carry a tracking unit. If so the device must be switched on and carried afloat during racing.

28. RESULTS

- 28.1 Provisional results will be posted on the RYS website as soon as possible after each race. Copies will also be posted on the official noticeboard in Cowes Yacht Haven.

29. PRIZES

- 29.1 The event main prize giving will be held at the Royal Yacht Squadron as soon as possible after the final day's racing and after any protest(s).
- 29.2 The Corinthian Prize will be awarded to the highest placed boat whose helm and crew are all World Sailing Sailor Classification Group 1. Those crews competing for the Corinthian Prize must provide their World Sailor Classification number before racing starts.

30. RISK STATEMENT

- 30.1 Rule 4 of the Racing Rules of Sailing states: "The responsibility for a boat's decision to participate in a race or to continue racing is hers alone."
- 30.2 Sailing is by its nature an unpredictable sport and therefore involves an element of risk. By taking part in the event, each competitor agrees and acknowledges that:
- They are aware of the inherent element of risk involved in the sport and accept responsibility for the exposure of themselves, their crew and their boat to such inherent risk whilst taking part in the event;
 - They are responsible for the safety of themselves, their crew, their boat and their other property whether afloat or ashore;
 - They accept responsibility for any injury, damage or loss to the extent caused by their own actions or omissions;
 - Their boat is in good order, equipped to sail in the event and they are fit to participate;
 - The provision of a race management team, patrol boats, and other officials and volunteers by the event

organiser does not relieve them of their own responsibilities;

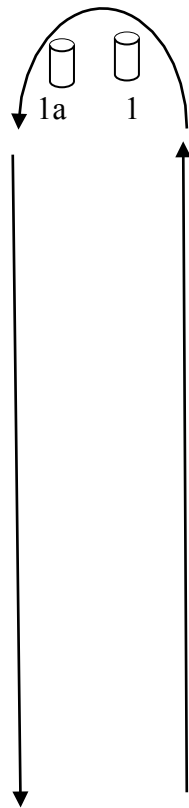
- (f) The provision of patrol boat cover is limited to such assistance, particularly in extreme weather conditions, as can be practically provided in the circumstances;
- (g) It is their responsibility to familiarise themselves with any risks specific to this venue or this event drawn to their attention in any rules and information produced for the venue or event and to attend any safety briefing held for the event;
- (h) They are responsible for ensuring that their boat is equipped and seaworthy so as to be able to face extremes of weather; that there is a crew sufficient in number, experience and fitness to withstand such weather; and that the safety equipment is properly maintained, stowed and in date and is familiar to the crew.

31. INSURANCE

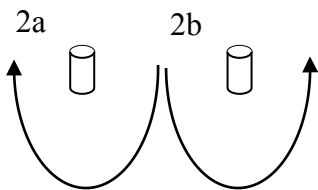
- 31.1 Each participating boat is required to hold insurance cover and in particular to hold adequate insurance against third party claims of at least £3 million.

ADDENDUM A

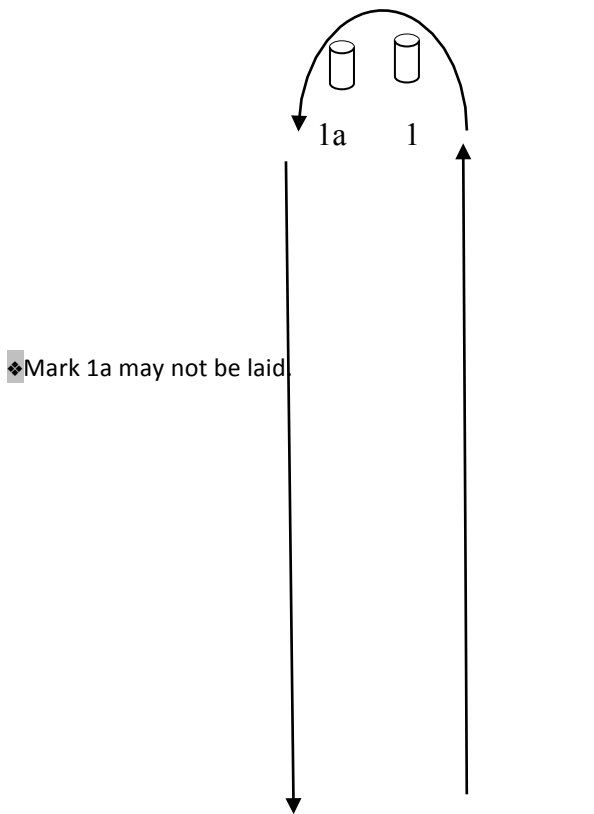
❖ Mark 1a may not be laid.



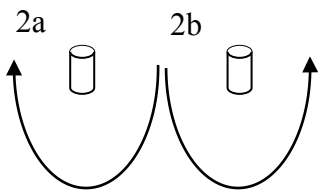
Course “W”
(Upwind Finish)
 NB Diagram not to scale.



W1	1, 1a❖, (2a, 2b), Finish (❖Mark 1a or 2a may not be laid.)
W2	1, 1a❖, (2a, 2b), 1, 1a❖, (2a, 2b), Finish (❖Mark 1a or 2a may not be laid.)
W3	1, 1a❖, (2a, 2b), 1, 1a❖, (2a, 2b), 1, 1a❖, (2a, 2b) Finish (❖Mark 1a or 2a may not be laid.)



Course “L”
(Downwind Finish)
 NB Diagram not to scale.



L1	1, 1a❖, Finish (❖Mark 1a or 2a may not be laid.)
L2	1, 1a❖, (2a, 2b), 1, 1a❖, Finish (❖Mark 1a or 2a may not be laid.)
L3	1, 1a❖, (2a, 2b), 1, 1a❖, (2a, 2b), 1, 1a❖, Finish (❖Mark 1a or 2a may not be laid.)

ADDENDUM B

- **Solent Chartlets**
- **Two Character Solent Mark Codes**